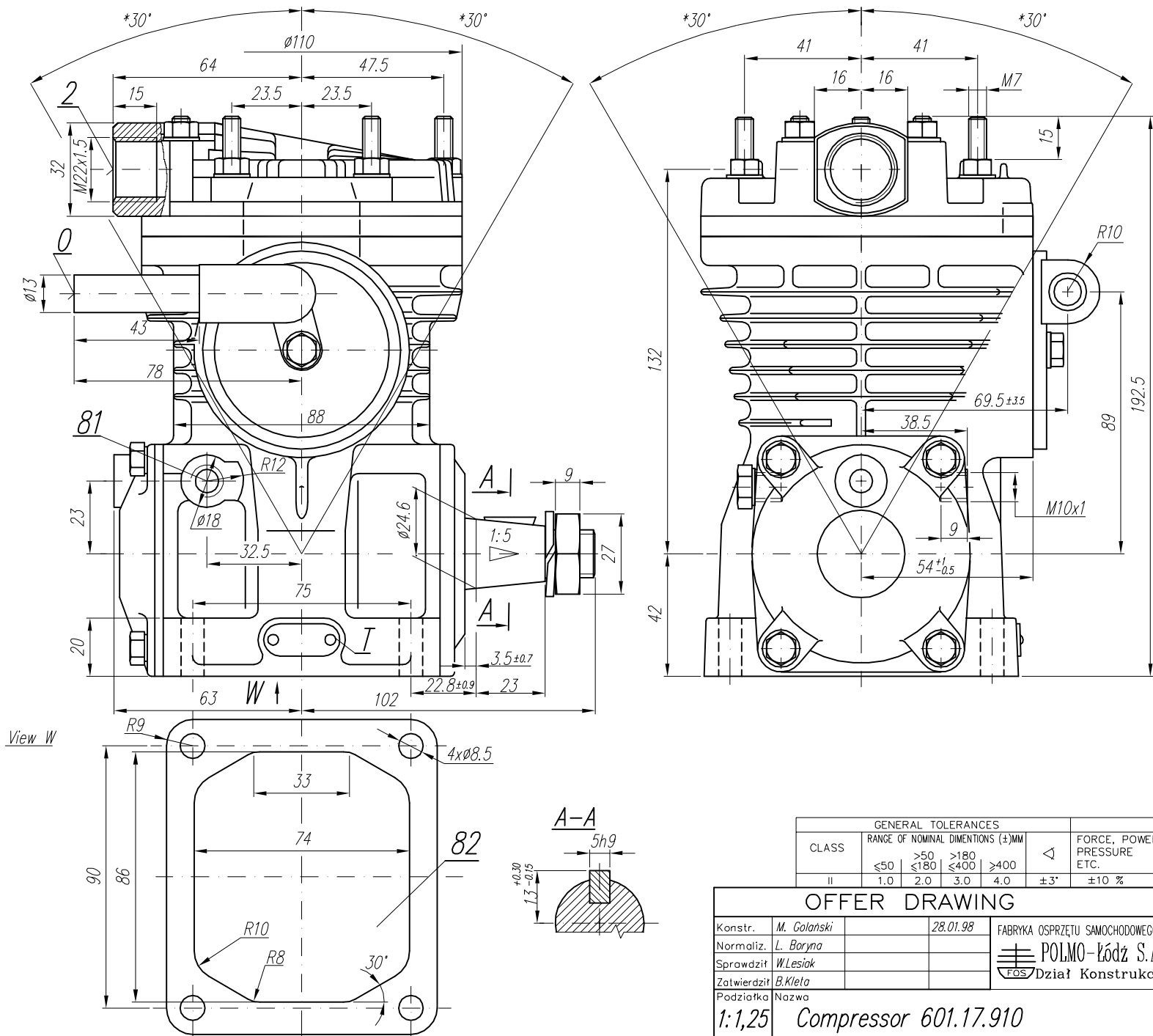


**TECHNICAL DATA:**

Number of cylinders 1  
 Cylinder diameter 65 mm  
 Piston stroke 23 mm  
 Total piston displacement 76 cm³  
 Mass 6.5 kg  
 Working pressure to 800 kPa  
 Max. pressure for short time duty 900 kPa  
 Max. allowable temp. of compressed air +220 °C  
 Normal speed max 3000 1/min  
 Cooling by inflation of air, with the speed of the stream min. 4 m/s  
 Lubrication forced circulation, splash lubrication  
 min. pressure of oil 200 kPa

**SYMBOLS DESCRIPTION:**

0 - suction connection  
 2 - discharge connection  
 81 - lubricating oil inlet  
 82 - lubricating oil outlet and crankcase breathing  
 Numeral signs according to International Standard ISO-6786  
 T - rating plate  
 \* - max. angular deflection of the compressor



**NOTE!** The above characteristics are for open-inlet-valve control system at minimum cooling requirements and at ambient temperature +20°C

**DEFINITIONS:** CC=CT+CL - period of average operating cycle

$UC = \frac{CT}{CC} \times 100\%$  - percent ratio of compressor full load operating time in average operating cycle (also called percent duty cycle)  
 CL - compressor no-load operating time (exhaust to the atmosphere)  
 CT - compressor full load operating time

CLASS	GENERAL TOLERANCES				FORCE, POWER PRESSURE ETC.
	RANGE OF NOMINAL DIMENSIONS (±)MM				
II	≤50	>50   ≤180	>180   ≤400	>400	±3* ±10 %
	1.0	2.0	3.0	4.0	

OFFER DRAWING			
Konstr.	M. Golanski	28.01.98	FABRYKA OSPRZĘTU SAMOCHODOWEGO
Normaliz.	L. Boryna		POLMO-Łódź S.A.
Sprawdził	W. Lesiak		
Zatwierdził	B. Kłeto		FOS Dział Konstrukcji
Podziałka	Nazwa		
1:1,25	Compressor 601.17.910		